

RESIDENCE 11

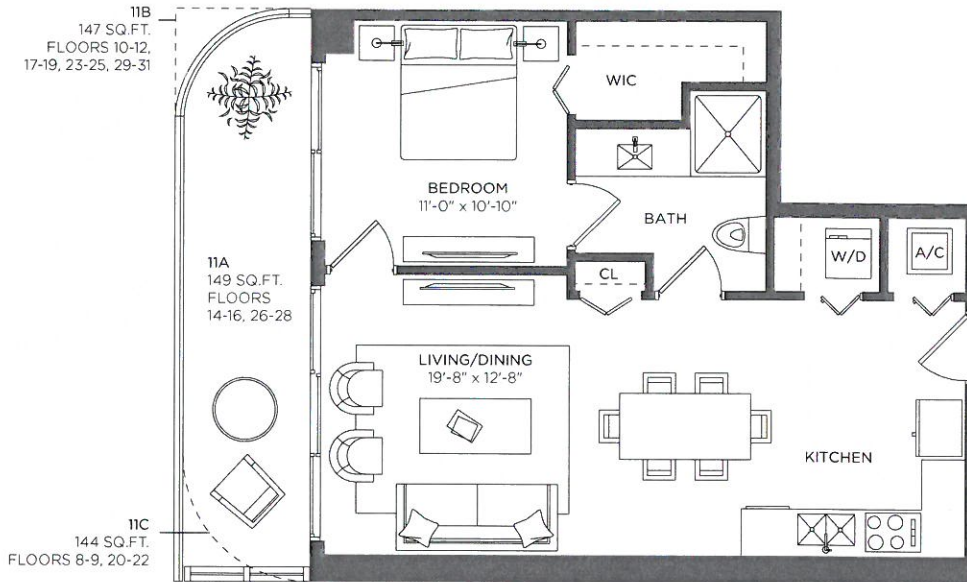
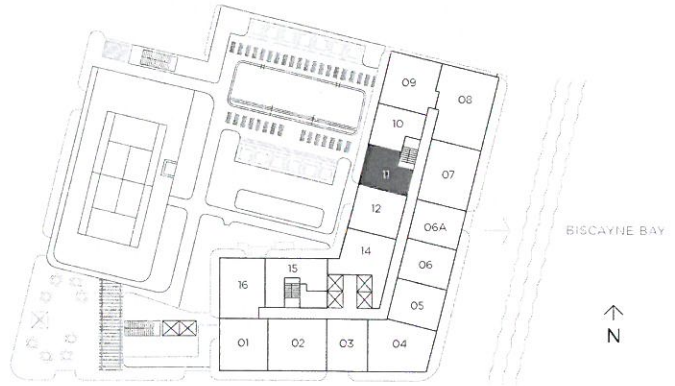
1 Bedroom 1 Bath

A/C INTERIOR AREA 694 sq ft / 64.47 sq m

TERRACE AREA 149 sq ft / 13.84 sq m

TOTAL RESIDENCE 843 sq ft / 78.31 sq m

FLOORS 8 - 31



There are various methods for calculating the square footage of a Unit and depending on the method of calculation, the quoted square footage of a Unit in advertising materials may vary from the square footage of a Unit as stated or described in the Prospectus and the Declaration. The dimensions in the Unit shown in these floor plans have been calculated from the exterior boundaries of the exterior walls to the centerline of interior demising walls, including common elements such as structural walls and other interior structural components of the building and in fact vary from the dimensions that would be determined by using the description and definition of the "Unit" set forth in the Prospectus and the Declaration. For your reference, the area of the Unit, determined in accordance with the Unit boundaries as defined in the Prospectus and the Declaration is 613 sqft for units 911, 1011, 1111, 1211, 1411, 1511, 1611, 1711, 1811, 1911, 2011, 2111, 2211, 2311, 2411, 2511, 2611, 2711, 2811, 2911, 3011 and 3111, which is less than the square footage reflected here. The measurements of room set forth on this floor plan are generally taken at the greatest points of each given room (as if the room were a perfect rectangle) without regard for any cutouts. Accordingly, the area of the actual room will typically smaller than the product obtained by multiplying the stated length times width. All dimensions are approximate and may vary with actual construction. All floor plans are subject to change. The furnishings and décor illustrated are not included with the purchase of the Unit. See Prospectus for information regarding what is offered with the Unit and the calculation of the Unit square footage and dimensions.